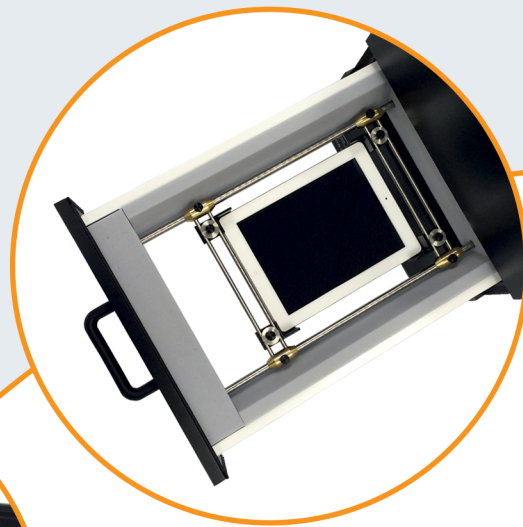


Acoustic Test Chamber

For production line testing

GRAS AL0030



Simple
Reliable
Repeatable

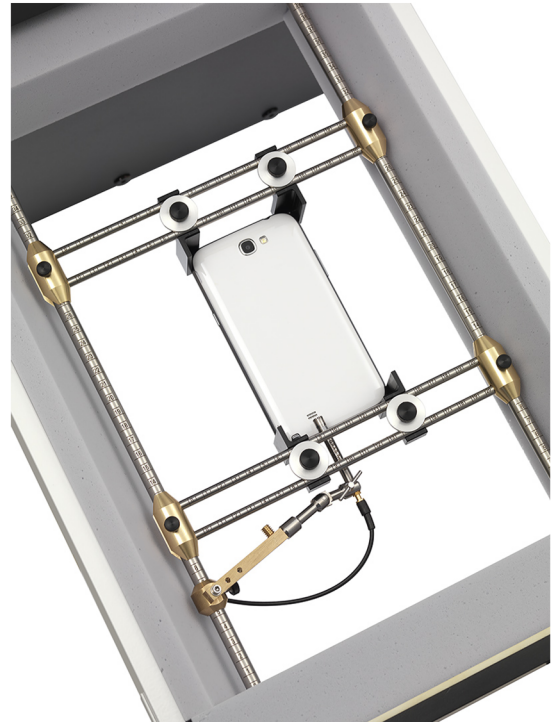
G.R.A.S.
SOUND & VIBRATION

Production Line Acoustic Test Chamber

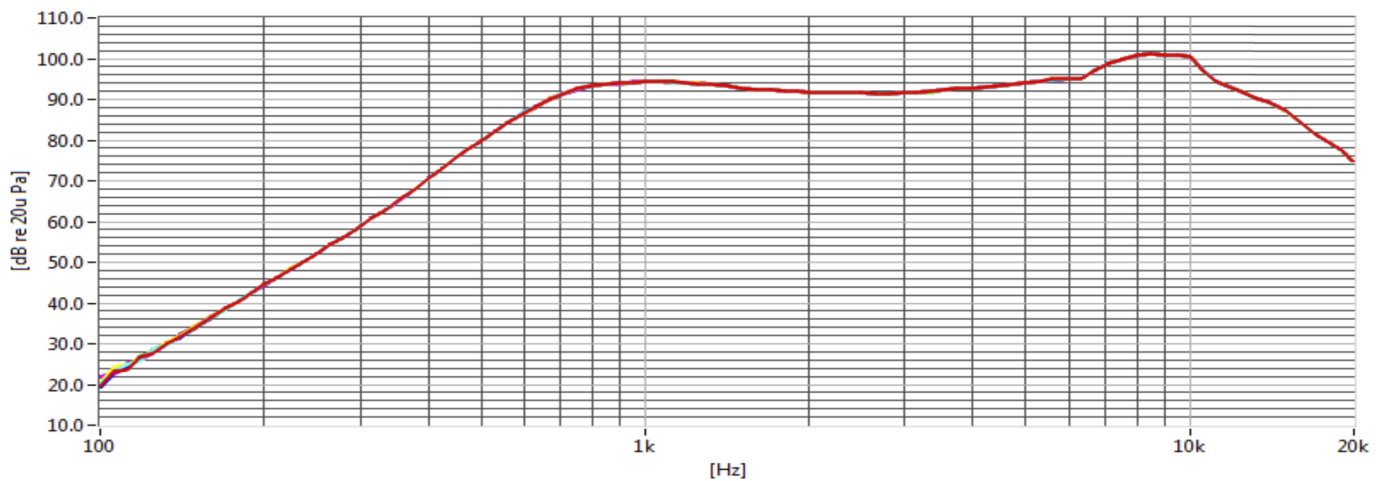
The new flexible production line acoustic test chamber (PLATC) is the latest in the range of anechoic chambers from G.R.A.S. and is built from our vast acoustic experience in the field. It is designed for quick and qualified acoustic test of cell phones, tablet PCs, Bluetooth speaker systems etc., including frequency response, THD, Rub&Buzz and microphone test using optional sound source. The chamber has a number of connections for injecting test and control signals to the Device Under Test.

- Repeatable testing and reliable data
- Easy open/close for quick and safe change of DUT
- Flexible test jig for easy adjustment to new DUT
- Flexible microphone mounting for both front/back side speakers as well as edge-mounted speakers
- High quality, high sensitive 1/4" CCP measurement microphone included (G.R.A.S. 46BL)
- Individually calibrated frequency response*

* Compared to reference measurement in anechoic room



Test jig with DUT and measurement microphone.



Graph shows 10 consecutive measurements on the same DUT.

Reference mic 46BL, 46BE, 46BD



DUT Holder OP0030



DUT Holder OP0031



DUT Holder OP0032



Build your own PLATC

Performance & mounting accessories

The basic chamber itself acts like a mini anechoic chamber allowing test of acoustic devices without the hassle of going into a full scale anechoic chamber*. The drawer allows quick exchange of device under test without putting physical stress on the operator. A marked and flexible test jig allow for easy adjustment to different size DUT's and repeating test setup from one chamber to the next. A large opening at the back of the chamber allows easy access to the chamber for test setup. The chamber is standing on four shock and vibration absorbing rubber feet to avoid vibration from other devices to influence the chamber measurements.

The standard PLATC configuration includes the basic suite of accessories needed for immediate audio response testing, with an array of available options allowing you to customize to your testing needs. For special requests contact your local G.R.A.S. sales partner.

* Due to chamber size the anechoic performance is limited at lower frequencies.

Included with your PLATC:

In the basic configuration are the following included:

- Acoustic test chamber
- Choice of one reference microphone
- Choice of one set of DUT holders
- Choice of one microphone holder
- One standard input connector panel*
- One cable for microphone

* Standard connector panel include 4 x BNC, 2 x USB and 2 x Mini DIN 4pin for multipurpose use.

Optional equipment:

44AA Mouth simulator with built-in Power Amp

44AB Mouth simulator for external Power Amp

43AH CCP Ear simulator for production line testing according to ITU-T P57 3.2 LL

43AI CCP Ear simulator for production line testing according to ITU-T P57 3.2 LL

Optional cables:

AA0032 BNC – BNC cable 0.5 meter

AA0033 BNC – BNC cable 1 meter

AA0034 BNC – BNC cable 2 meter

AA0035 BNC – BNC cable 3 meter

AA0070 Microdot – BNC cable 3 meter

AA0073-CL Microdot – BNC cable custom length

Reference microphones:

46BL ¼" High sensitive pressure CCP microphone set

46BD ¼" Low sensitive pressure CCP microphone set

46BE ¼" Free Field CCP microphone set

DUT holders:

OP0030 Small DUT holder, low placement in drawer

OP0031 Large DUT holder, low placement in drawer

OP0032 Small DUT holder, top placement in drawer

Microphone holders:

OP0040 Microphone holder for top/bottom mounting

OP0041 Microphone holder for mounting in drawer

Sound source holders:

OP0045 Holder with swivel head for GRAS 44AA

OP0046 Heavy duty version of the above holder

Input connector panels:

OP0050 Connector panel – Standard

OP0051 Connector panel – Blank for customization

Microphone Holder OP0040



Microphone Holder OP0041



Sound Source Holder OP0045



Sound Source Holder OP0046



Specifications

Acoustic test chamber:

Frequency range: 100Hz – 20kHz
 Noise insulation (SIL): >25dB (3rd Octave)
 Patch panel connections: 4 x BNC
 2 x USB
 2 x Mini DIN 4 pin
 Dimensions (WxDxH): 42,4 x 62,2 x 52,4 cm
 Weight: 38 kg

Reference Microphones:

46BL:
 Frequency range: 4Hz – 20kHz
 Dynamic range: 25dB(A) – 147dB
 Sensitivity: 18mV/Pa
46BD:
 Frequency range: 4Hz – 70kHz
 Dynamic range: 44dB(A) – 166dB
 Sensitivity: 1,45mV/Pa
46BE:
 Frequency range: 4Hz – 80kHz
 Dynamic range: 35dB(A) – 160dB
 Sensitivity: 3,6mV/Pa

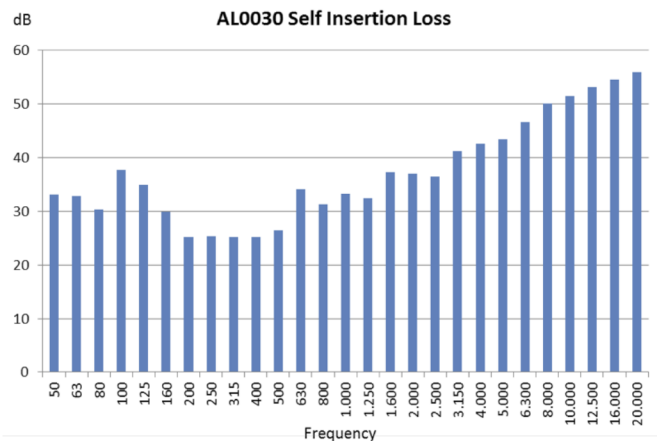


Figure shows SIL for GRAS AL0030 measured in reverberant conditions.

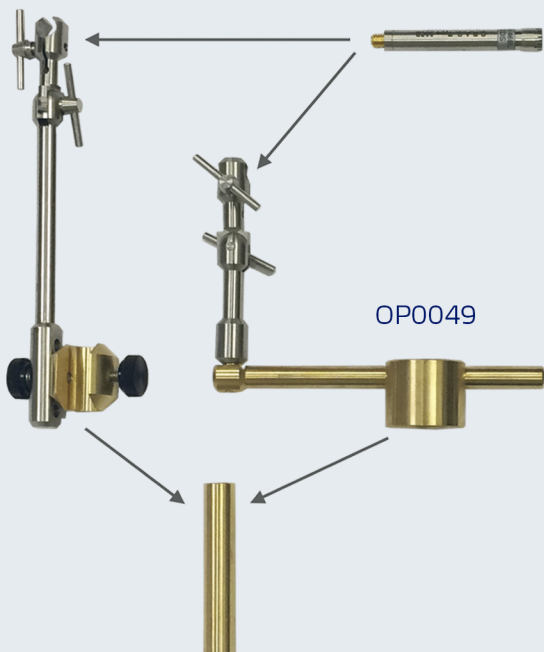
Mouth simulators 44AA & 44AB:

Standards: IEEE 269, 661 and ITU-T Rec. P51
 Continous output level: 110dB (200Hz-6kHz)
 100dB (200Hz-6kHz)
 Loudspeaker: 8Ω/ 20W (max)
 Gain*: 10dB
 Power supply*: 24Vdc
 Weight: 1.3Kg

*Only valid for 44AA

OP0041

46BL, 46BE, 46BD



OP0030, OP0031, OP0032



44AA, 44AB



We make microphones